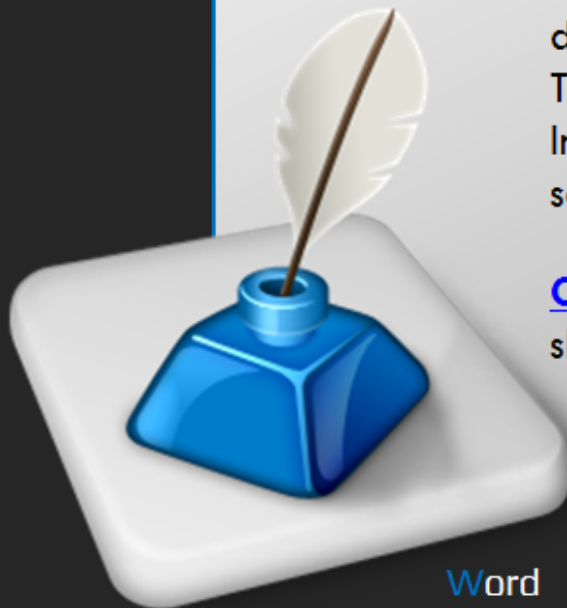


## Speed up Scrolling in Large documents with Images

Scrolling is quite slow when reading or editing a large document that is completely full of images and drawings. This is because Word has to load each image as you scroll. In this tip, we will provide handy tips to improve the scrolling performance of a large document.

[Click here](#) to view how you can deal with this needless slowdown.



Word

Prepared by Information Security and IT Governance Division of ICT.  
Productivl.T.y showcases tips & tricks on various  
office and branch applications.

## Speed up Scrolling in Large documents with Images

We have two options:

**A. Display picture placeholders rather than the actual images**

- Picture placeholders display an empty box in place of each image in the document.

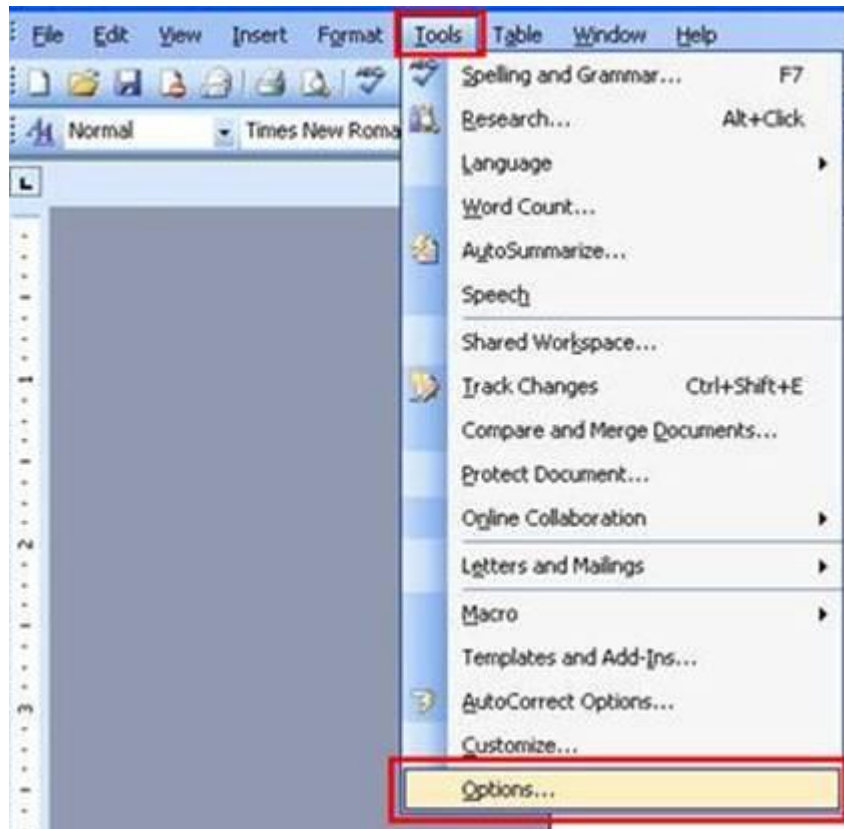
**B. Hide all drawing objects or AutoShape**

- This will hide all the images /graphics you have created using the Word drawing tools or AutoShape.


### A. To display Picture Placeholders only:

(MS Word 2003)

1. On the Menu bar, select **T**ools then choose **O**ptions.  
Options dialog box will pop-up.

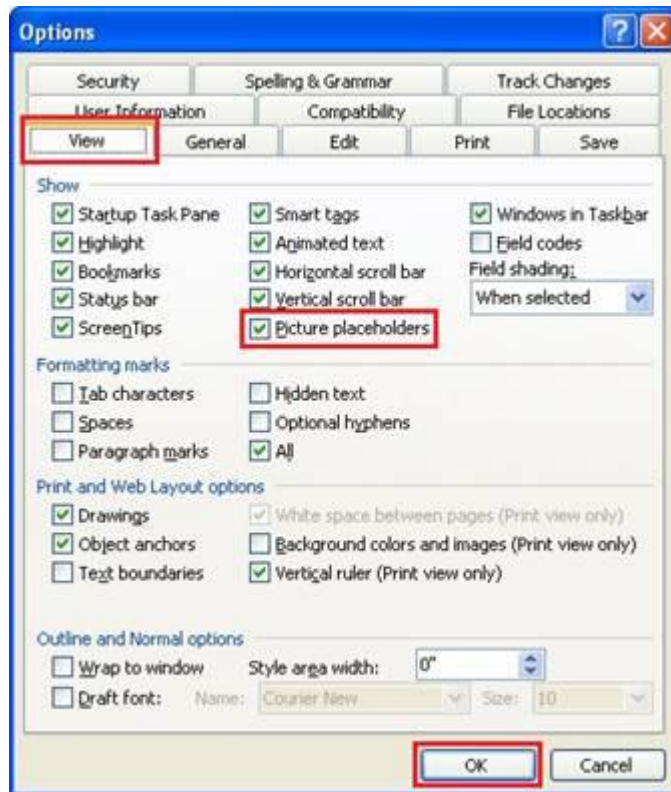


(MS Word 2007)

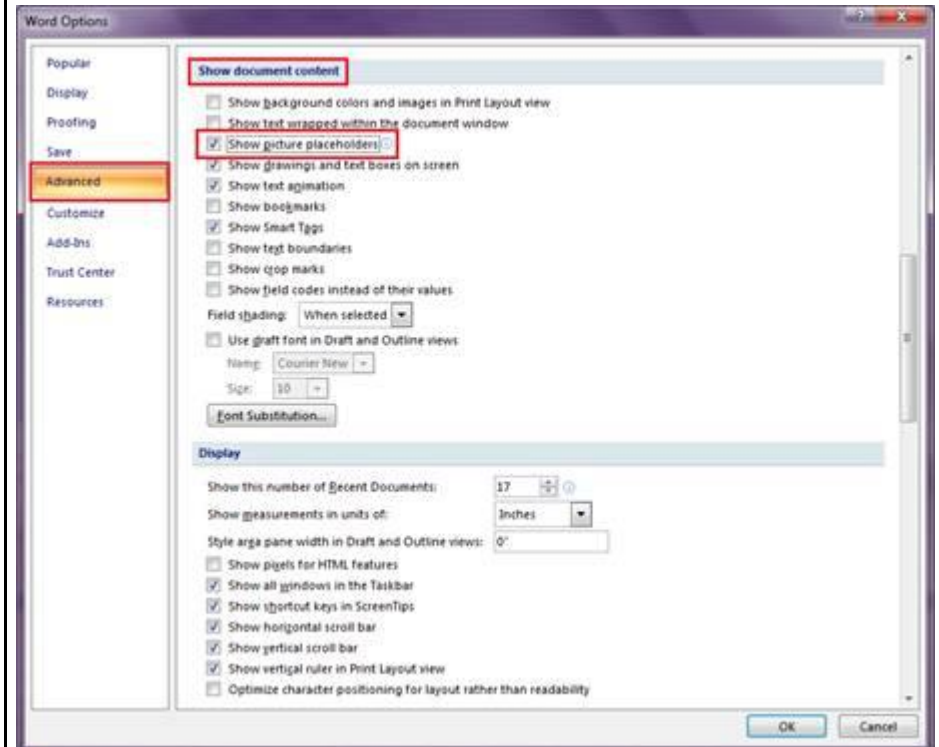
1. Click the Office button  and select **W**ord **O**ptions.  
Word Options dialog box will pop-up.



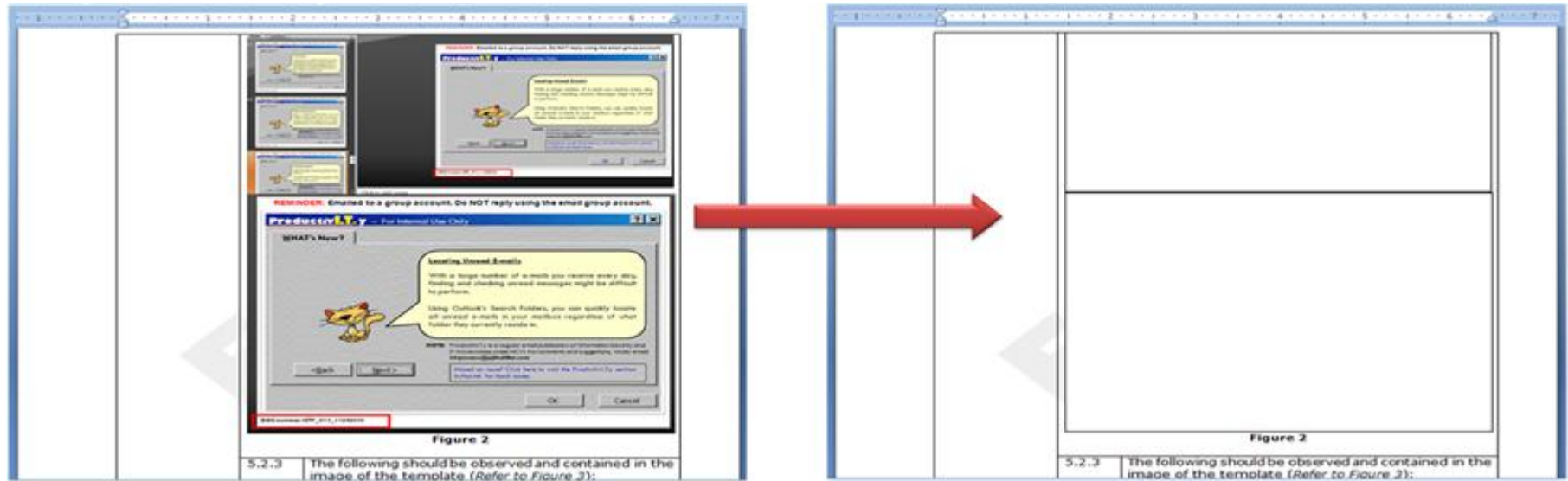
2. In the Options dialog box, choose View tab. In the Show section, check the Picture placeholders check box, and click OK.



2. In the Advanced settings, scroll down on the Show document content section then check the Show picture placeholders check box and click OK.



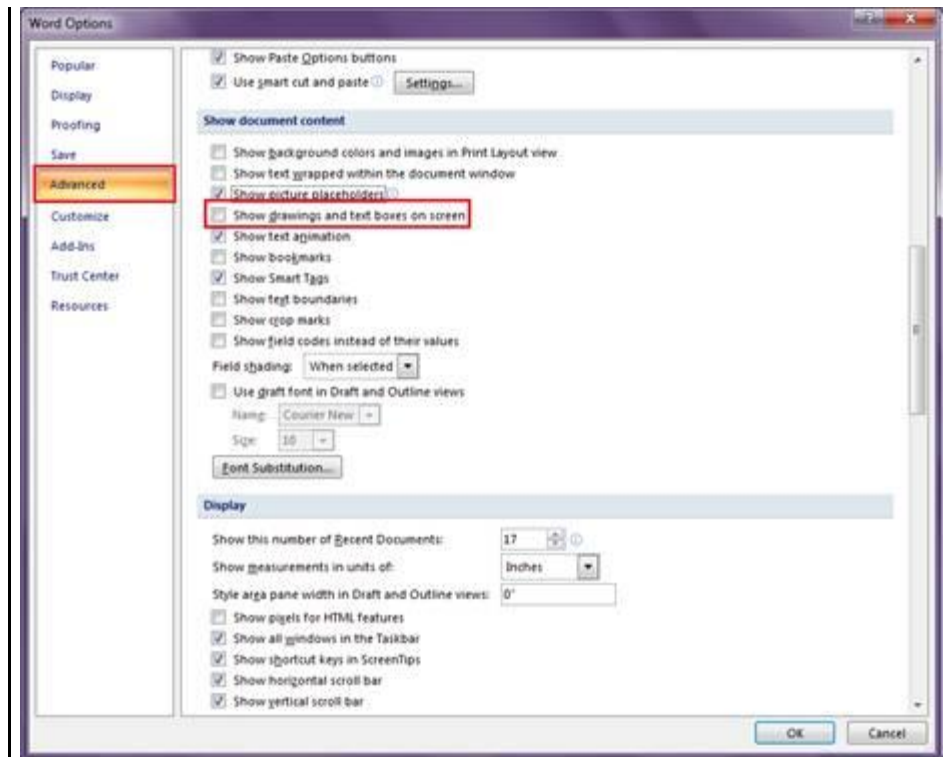
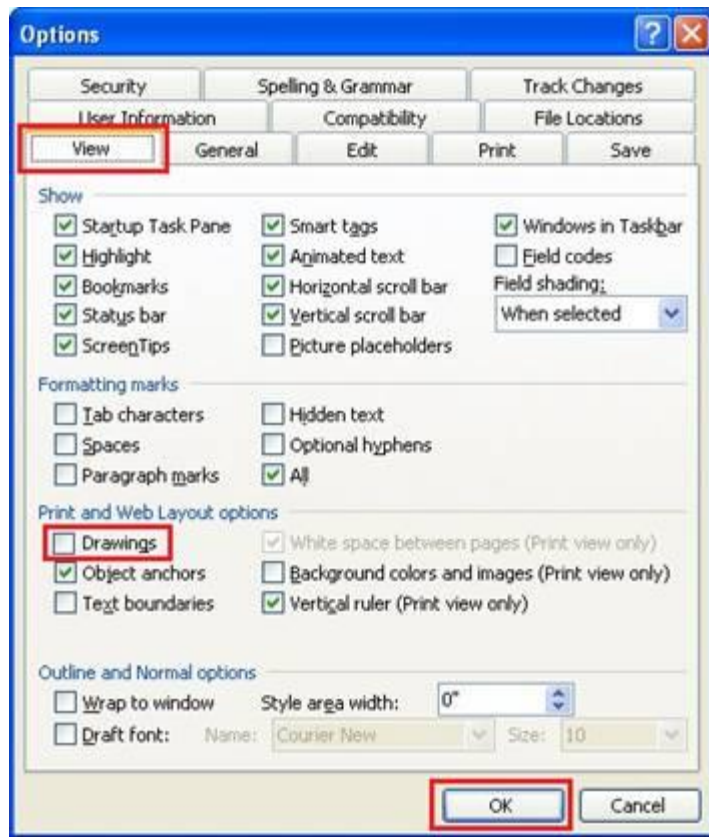
- Notice that all images in your document are replaced by an empty box, making the scrolling faster.



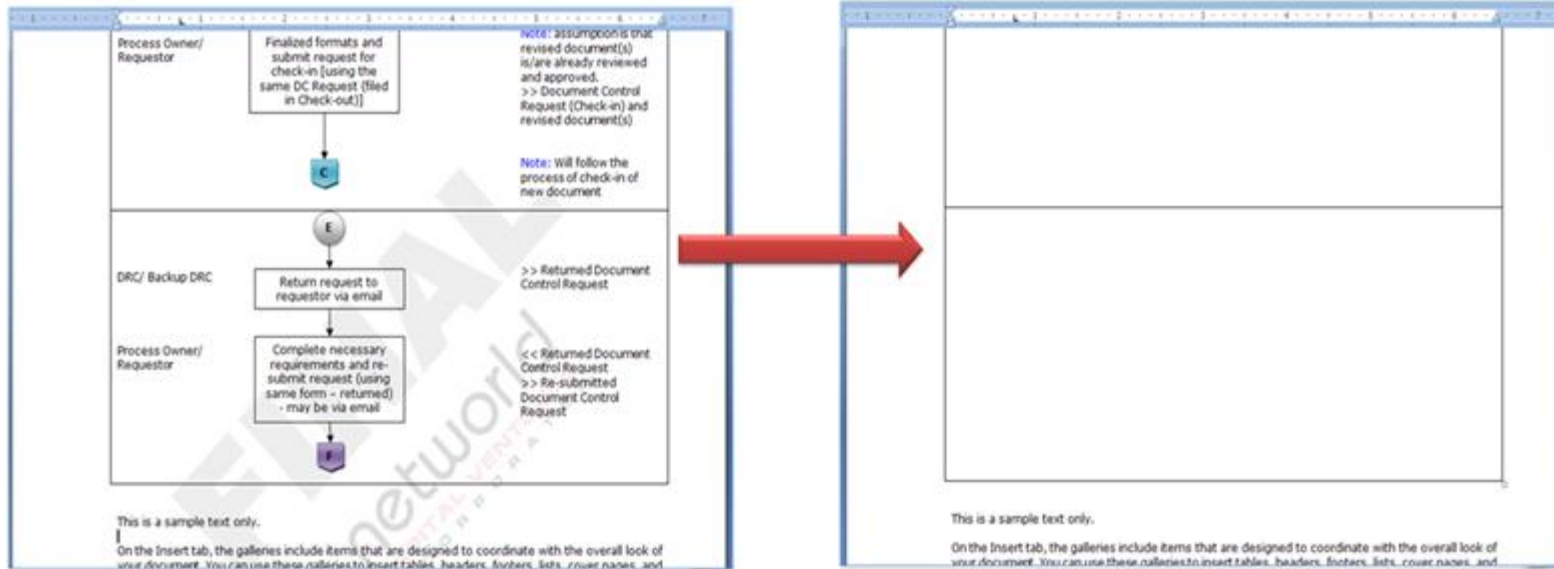
**NOTE:** You will only see the empty box/empty frame when you read or edit your document. When you use the Print Preview or Print feature, you will still see the actual images/pictures. To return to the actual view of the images, **uncheck** the **Show picture placeholders** check box.

## B. To hide all drawing objects or AutoShape:

(MS Word 2003)	(MS Word 2007)
<ol style="list-style-type: none"> <li>1. Reopen the <b>Options</b> dialog box (similar to step 1 in the above procedure to display picture placeholders).</li> <li>2. In the <b>Options</b> dialog box, choose <b>View</b> tab. In the <b>Show</b> section, <b>uncheck</b> the <b>Drawings</b> check box, and click <b>OK</b>.</li> </ol>	<ol style="list-style-type: none"> <li>1. Reopen the <b>Word Options</b> dialog box (similar to step 1 in the above procedure to display picture placeholders).</li> <li>2. In the <b>Advanced</b> settings, scroll down on the <b>Show document content</b> section then <b>uncheck</b> the <b>Show drawings and text boxes on screen</b> check box and click <b>OK</b>.</li> </ol>



3. Notice that all drawings or AutoShape will be hidden, making the scrolling faster.



**NOTE:** Images are hidden only when you read or edit your document. When you use the Print Preview or Print feature, you will still see the actual images/pictures. To return to the actual view of the images, **check the Show drawings and text boxes on screen check box.**

We value your feedback. Please help us improve our ProductivI.T.y releases by filling out the ["Serbisyon Bida"](#) online survey form. You may also email your comments and suggestions to [ict-process@pjlhuillier.com](mailto:ict-process@pjlhuillier.com). [Click here](#) for back issues of ProductivI.T.y in MyLink.