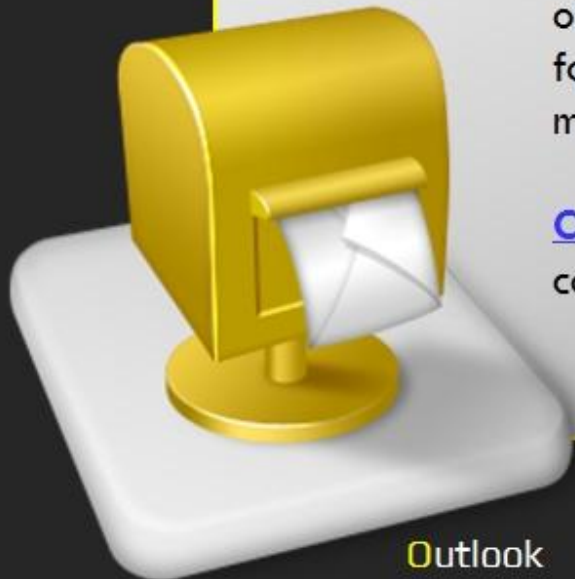


Outlook Instant Search Query Commands

We are all aware that the Instant Search Box in Outlook offers a great help when finding emails within a mail folder. But did you know that typing certain commands can make your searching more efficient?

[Click here](#) to know some of the useful and easiest query commands for Outlook's Instant Search.



Prepared by Information Security and IT Governance Division of ICT.
Productivl.T.y showcases tips & tricks on various office and branch applications.

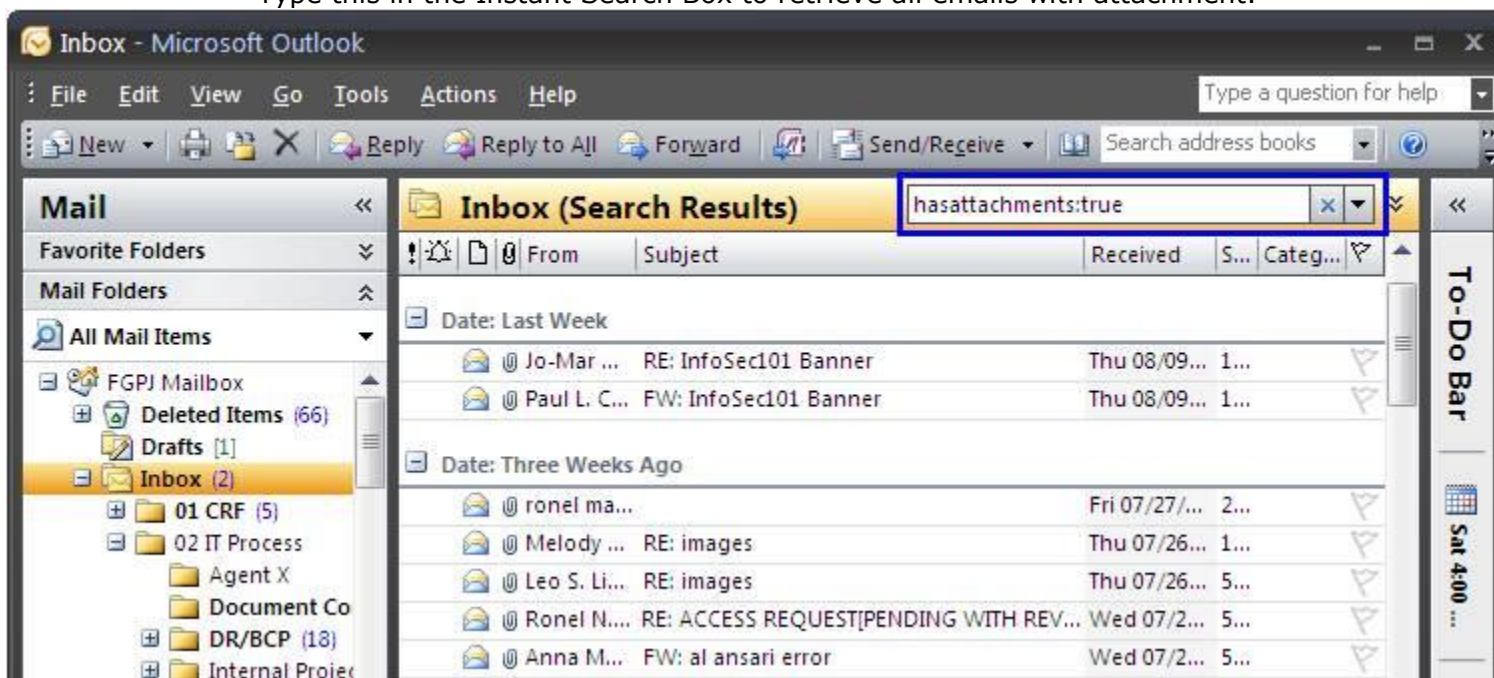
Outlook Instant Search Query Commands

The Instant Search Box of Outlook was optimized to allow faster searching. Aside from its built-in feature to setup the search parameters, Instant Search Box now accepts query commands for efficient searching.

Below are some of the easiest commands that offer great help:

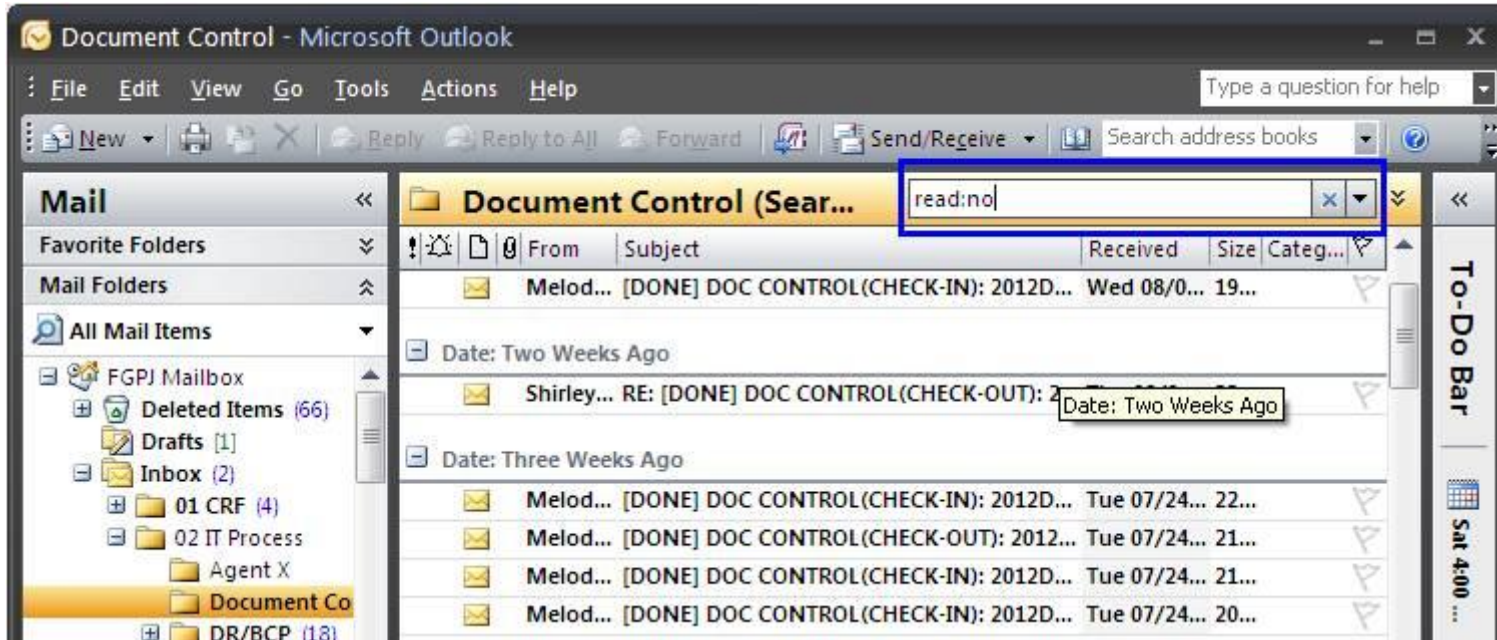
hasattachments:true

Type this in the Instant Search Box to retrieve all emails with attachment.



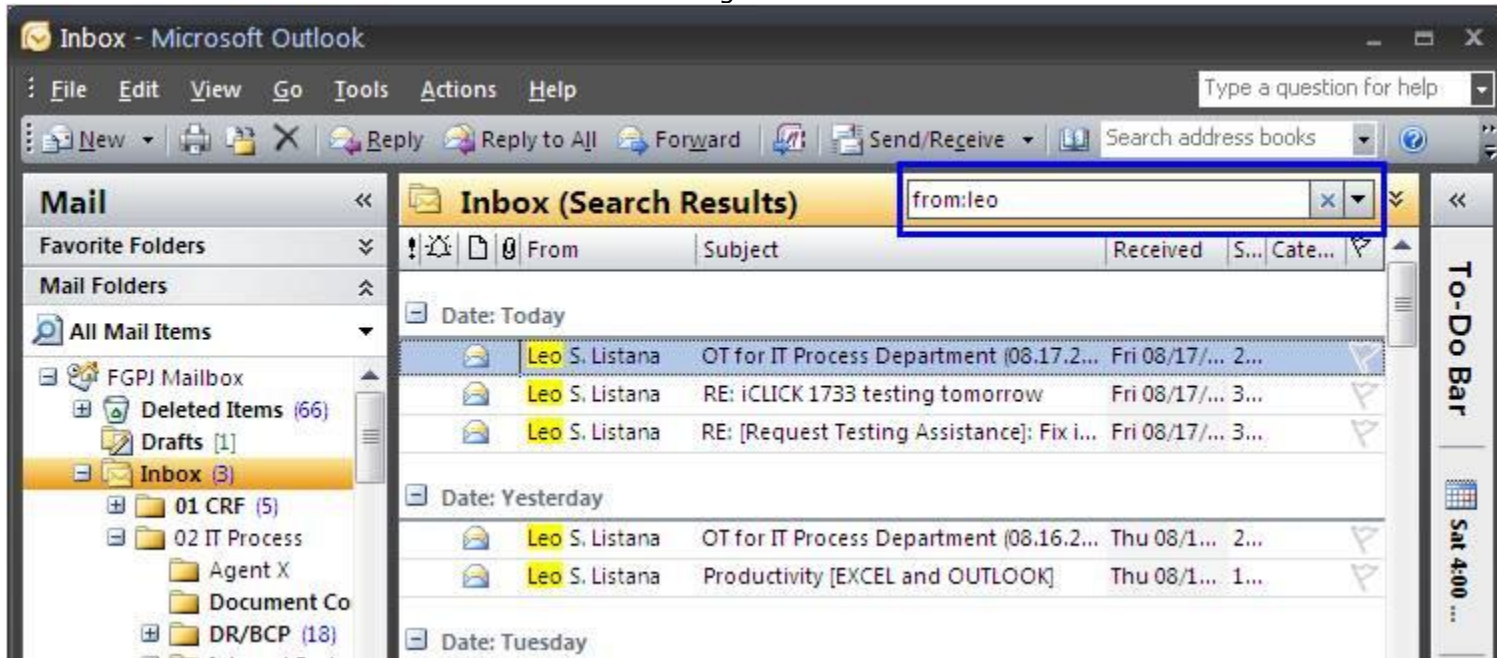
read:no

This command retrieves all unread emails.



from:[name of sender]

This command retrieves all messages from the defined "name of sender".

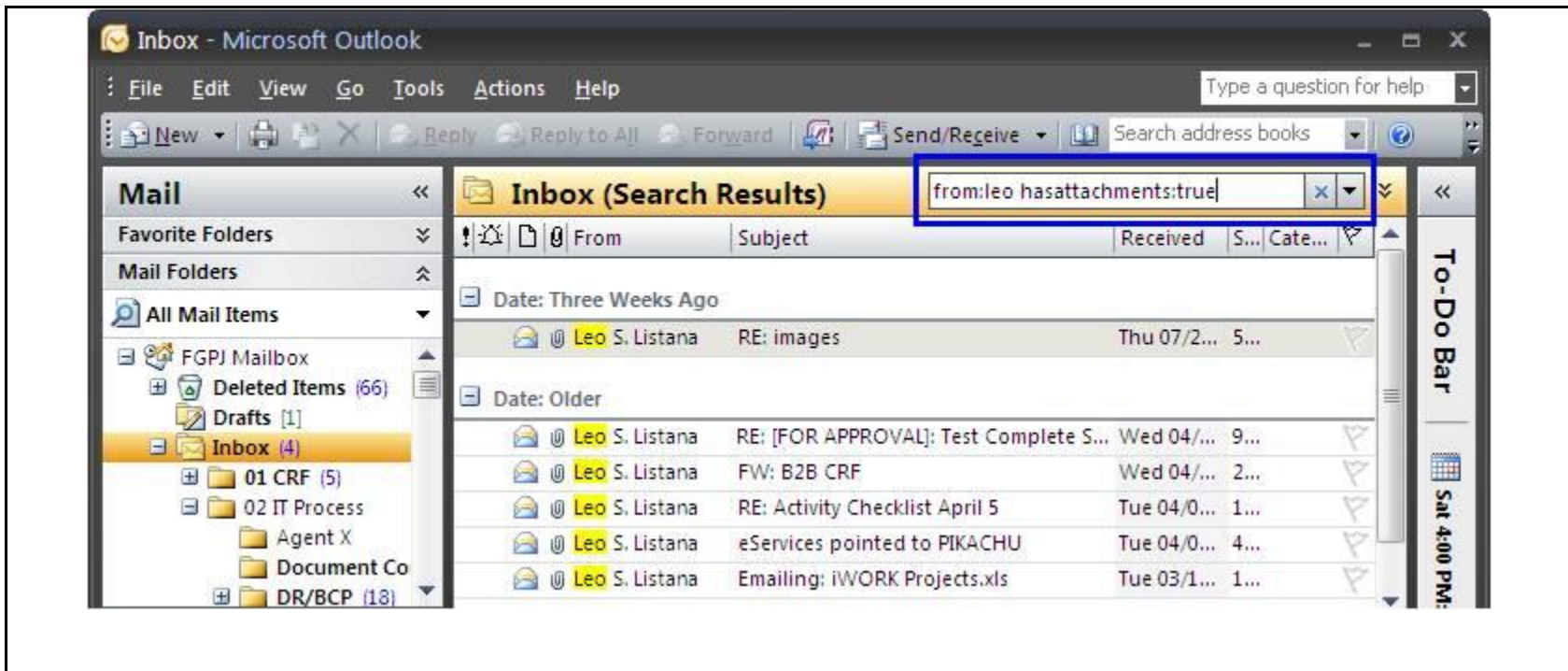


Combining Query Commands

Commands may also be combined to set the desired search parameter, for example,

from:leo hasattachments:true

This command retrieves all emails from 'Leo' containing attachments.



We value your feedback. Please help us improve our ProductivI.T.y releases by filling out the ["Serbisyong Bida"](#) online survey form. You may also email your comments and suggestions to ict-process@pjlhuillier.com. [Click here](#) for back issues of ProductivI.T.y in MyLink.