

## Convert your data to a different unit of measurement (Part 2)

The Analysis ToolPak add-in includes the **CONVERT** function which will help you in converting your data to any desired measurement (e.g., mass, liquid, length, temperature and many others).

[Click here](#) to view how to use the CONVERT function.



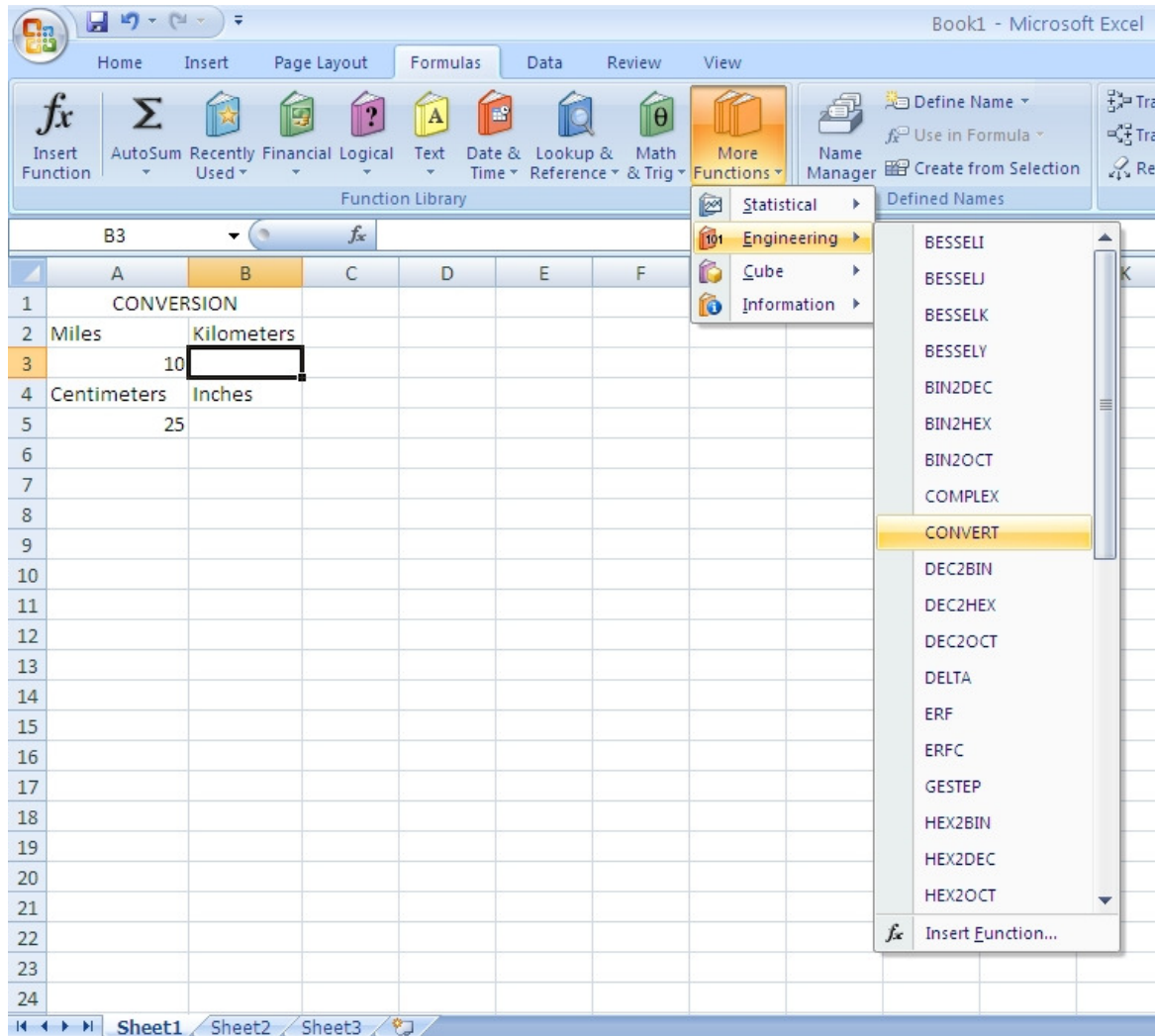
Prepared by Information Security and IT Governance Division of ICT.  
Productivl.T.y showcases tips & tricks on various office and branch applications.

## Convert your data to a different unit of measurement

Once you installed the ToolPak add-in (as showed on Productivl.Ty release no. 91), you can use the CONVERT function to instantly perform the conversions from miles to kilometers (or any measurements related conversions).

To convert miles to kilometers:

1. Select the cell where the conversion will be located, for example B2 then click on the Formulas tab and choose More Functions > Engineering from the drop down list and click CONVERT.



2. On the CONVERT dialog box, click on the Number line text box and click the cell that contains the number to be converted, A3. Then enter mi in the From\_Unit text box and km in the To\_Unit text box and click Ok.

Book1 - Microsoft Excel

Home Insert Page Layout Formulas Data Review View

Function Library: Insert Function, AutoSum, Recently Used, Financial, Logical, Text, Date & Time, Lookup & Reference, Math, More Functions, Name Manager, Defined Names, Trace Precedent, Trace Dependence, Remove Arrows

Formulas bar: CONVERT, X, ✓, fx, =CONVERT(A3,"mi","km")

1	CONVERSION													
2	Miles	Kilometers												
3	10	"mi","km")												
4	Centimeters	Inches												
5	25													
6														
7														
8														
9														
10														
11														
12														
13														
14														
15														

**Function Arguments**

CONVERT

Number: A3 = 10

From\_unit: "mi" = "mi"

To\_unit: "km" = "km"

= 16.09344

Converts a number from one measurement system to another.

To\_unit is the units for the result.

Formula result = 16.09344

[Help on this function](#)

OK Cancel

Home Insert Page Layout Formulas Data Review

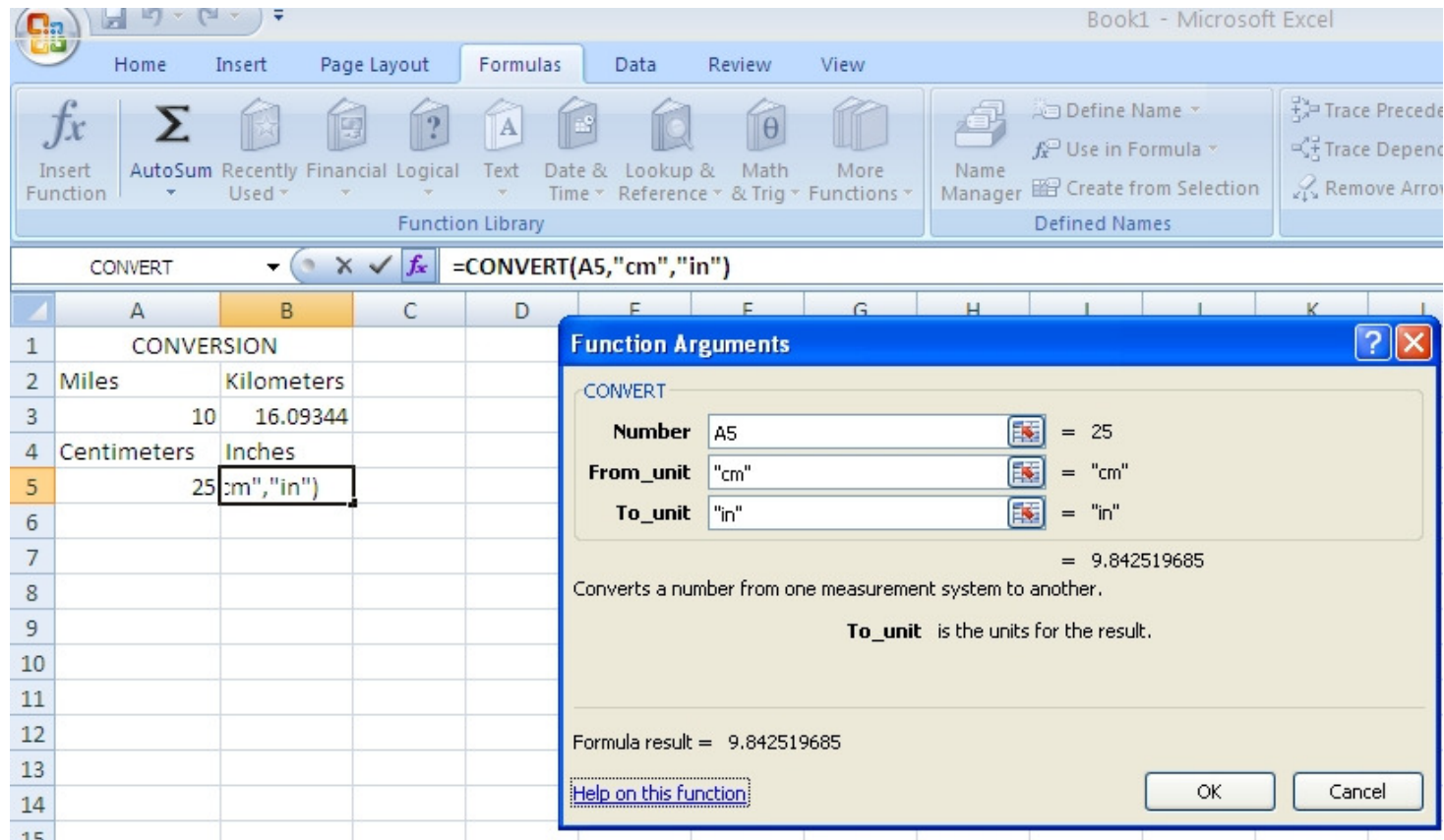
Function Library: Insert Function, AutoSum, Recently Used, Financial, Logical, Text, Date & Time, Lookup & Reference, Math, More Functions, Name Manager, Defined Names, Trace Precedent, Trace Dependence, Remove Arrows

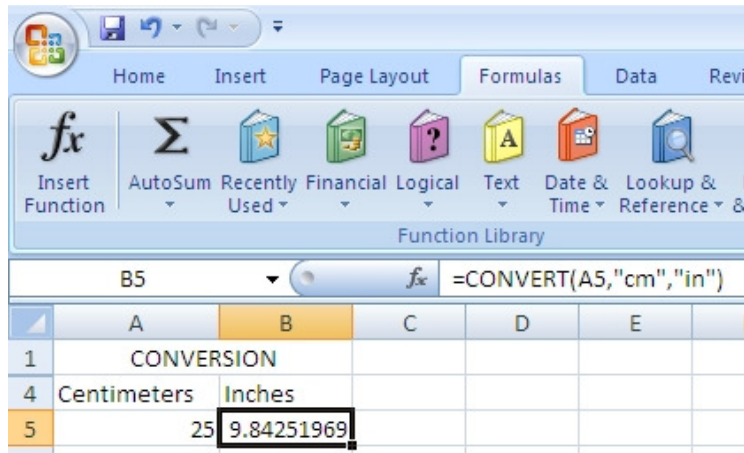
Formulas bar: B3, fx, =CONVERT(A3,"mi","km")

1	CONVERSION													
2	Miles	Kilometers												
3	10	16.09344												

- To apply the formula to the other cells drag its fill handle down to the desired cell.

The CONVERT function also converts units of measurement for mass, liquid, length, temperature and many others.





We value your feedback. Please help us improve our ProductivI.T.y releases by filling out the **"Serbisyong Bida"** online survey form. You may also email your comments and suggestions to [ict-process@pjlhuillier.com](mailto:ict-process@pjlhuillier.com). [Click here](#) for back issues of ProductivI.T.y in MyLink.